

जय गुरु पन्ना रजिस्ट्रेशन नं. 205/83-84 दि. 15-9-84 © (01483) 223969, Mo.- 9413823969 GSTIN- 08AABAP4017A1ZS PAN AABAP4017A	जय गुरु सोहन 	श्री नानकसोहनसुदर्शनाचार्यभ्यो नमः आयकर अधिनियम 1961 की धारा 80 G के अन्तर्गत-कार्यालय आयकर आयुक्त अजमेर के आदेशानुसार संस्था को जो भी आर्थिक सहयोग दान स्वरूप दी जायेगी वह 80 G के तहत आयकर से मुक्त है ।
प्राज्ञ मिर्गी रोग निवारक समिति (रजि.) Pragya Mirgi Rog Niwarak Samiti (Regd.) Gulabpura		
President – Ghewar Chand Shree Shreemal, 94138-808079		Secretary- Padam Chand Khatod

Introduction

This charitable hospital was established in 1978 in the memory of our Param Pujya Gurudev Late Shri Pannalaji Maharaj Sahib (A saint of Jainism). Since then, the hospital has served the cause of treating patients with Epilepsy.

Location: Digital location is www.pragyaepilepsycare.in. We are also registered on the NGO Portal i.e. Darpan of Niti Aayog (Govt. of India) with registration No. RJ/2021/0283319.

Physical location is in the small town of Gulabpura, in Bhilwara district of Rajasthan. It is connected by train on Northern-Western Railway division and by road on NH 79. The nearby districts headquarters of Bhilwara, Ajmer and Beawar are about 70 Kms away. We serve patients from 59 districts from 13 states of India.

Patients and facilities: Since inception in 1978, we have registered more than 49,000 patients. On average, 2200 patients take a monthly medicine regimen free of cost. Since April 2015, patient records have been digitized and so far, the hospital has computerized records of over 17,500 patients. All new patients are registered digitally. Information such as health status with respect to epilepsy (Mirgi), prescribed treatment, appointment for next visit, etc is now given digitally. This centre is housed in a separate building with ample parking space and garden. There are 3 consultation chambers, an emergency room, office, store, drug dispensing centre, computer room, waiting area and an EEG recording room. In addition, we have residential accommodation for patients who come from far-off distances. In 2015 we also become a member of Indian Epilepsy Association.

Awareness among patients: In addition to our digital records, we provide an Epilepsy Diary (~30 pages) in Hindi to every patient on their first visit. The diary has complete information about the patient's clinical condition, diagnosis and doctor's prescription. In addition, this diary has basic information about epilepsy, various misconception associated with it, first aid during a seizure. Furthermore, we have installed a TV in the common meeting room where videos related to epilepsy are shown, which received an overwhelming positive support. We aim to further increase awareness of Epilepsy and our services to nearby communities

Patient treatment and monthly camps: Conventional first line antiepileptic drugs (generic and branded) are given for free to all patients every month throughout the course of the treatment. For the last 6 years, a team of doctors consisting of Neuro Physicians, Physicians and Psychiatrists from M.G. Hospital (Sitapura, Jaipur) led by Dr. R.K. Surekha have been conducting monthly Epilepsy camps at our hospital. During these monthly camps, we conduct counselling and yoga sessions from experienced professionals. With Covid-19, this camp was temporarily paused from March 2020, before resuming again in November 2021. In addition, local doctors Dr R. Chandak MD, Dr. G.L. Gupta MD, Dr. Meena MBBS, Dr. Rathore MBBS help us in evaluating and guiding the patients.

Financial: This is a charitable hospital. Donations are received from the generous members of the community. The hospital is run by the Jain society, namely "*Shri Pragya Mirgi Rog Niwarak Samiti*". The donations are exempted from income tax. The annual expense of the hospital is ~INR50 lacs (US\$67,000) including the cost of medicine. The accounts are audited by a certified Chartered Account. Tax PAN No. is AABAP4017A.

Performance :- Enclosed find herewith a table showing details of patients visiting our hospital.

Year	No. of patients visiting the hospital			Average patient per month	Approximate quantity of medicine supplied (by tablets)
	Old	New	Total		
2015-16	35,384	1,969	37,353	3,112	~77 lac tablets
2016-17	28,272	2,147	30,419	2,534	~82 lac tablets
2017-18	25,738	2,098	27,836	2,319	~87 lac tablets
2018-19	26,109	2,136	28,245	2,353	~88 lac tablets
2019-20	26,342	2,170	28,512	2,376	~90 lac tablets
*2020-21	18,730	1,510	20,240	1,686	~70 lac tablets

*During covid-19 period

Performance for the year 2022 (Jan-Dec.) : Following table lists the medicine distributed during the year :

Name	Dosage	Qty.
Phenytoin tabs IP	100mg	36,51,270 tab.
Phenobarbitone tabs IP	30mg	33,64,835 tab.
Carbamazepine tabs	200mg	74,875 tab.
Sodium valproate & valproic acid	200mg, 300mg, 500mg	8,73,274 tab.
Sodium valproate oral solution IP	200mg	8,624 bottles
Clobazam tabs	10mg, 5mg	6,725 tab.

No. of old patients visited 15,952 + New patients 2,156, Total no. of patients 18,108.

No. of camps held – 29, average patient in the camp – 80.

Mostly patient were issued 3 months medicine at a time to reduce the travel frequency in view of Covid situation.

Dignities visited during last 5 years: The following doctors have visited our hospital and strongly praised our efforts in the field. They have also taken the initiative to guide us with their valuable suggestions.

Name	Specialization	City
Dr. Pratap Sanchetee	Neuro physician	Jodhpur
Dr. R.K. Sureka	Neuro physician	Jaipur
Dr. Nirmal Soorya	Neuro physician	Bombay
Dr. Satish Jain	Neuro physician	Delhi
Dr. Gagandeep	Neuro physician	Ludhiana
Dr. Meena Gupta	Neuro physician	Gurgaon
Shri Naveen Jain	Secretary Health, Govt. of Rajasthan (M.D. NRHM)	Jaipur

Our Future Plan: We have many patients at our hospital and we are looking for the following in future.

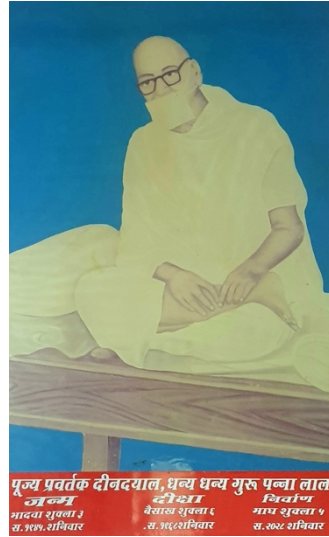
1. A camp by an Epileptologist/ Neuro physician every week
2. Research on social and medical issues. We invite any medical college to take up this project.
3. Outreach in the village areas to create awareness about epilepsy.
4. Tackle social issues and rehabilitation of epilepsy patients and families.
5. To make this centre a Model Centre for epilepsy.

The mirgi hospital has been operating and serving the poor section of the society which is affected by the social stigma associated with epilepsy. For over 40 years, we have been striving to eradicate this social stigma, and further improve the care we provide to our patients without compromising the quality of the medicine. As such, we are looking to grow and get better facilities in a small town like Gulabpura.

Location on the map



Late Shri Panalal ji Marasa



Patient Diary in Hindi

श्री प्राज्ञ मिर्गी रोग निवारक समिति एवं अनुसंधान केन्द्र
SHRI PRAGYA EPILEPSY & RESEARCH CENTER
 प्लाजपुरा-311 021 (राजस्थान) फोन: 01483-223969
 मो. 9413823969 E-mail: pragyamirgi@gmail.com
 स्थापित 1978

अस्पताल का समय: रविवार पूर्ण अवकाश
 नाईचे सितम्बर: (विशेष को कर्मादि दिन पर चले होंगे।)
 9:30 AM से 1:30 PM अक्टूबर से फरवरी
 4:00 PM से 6:30 PM

मिर्गी मार्गदर्शिका एवं रोगी उपचार डायरी

अध्यक्ष कमलचन्द खट्टोर, चेन्नई मो. 09840441000	वरिष्ठ उपाध्यक्ष मूलचन्द नौबेड़ा, प्रिजयपुरा मो. 9829795227	संजी चेतचन्द शीरोडकर, गुजरात मो. 09413880279
सदस्यी सुनील लोढ़ा, गुजरात मो. 9214833419	व्यवस्थापक चंद्रमाल लोढ़ा, गुजरात मो. 8003597108	सिविर प्रभारी मनमलाल लोढ़ा, गुजरात मो. 9460994381

Photos of Hospital



Monthly camps



Patient checkup



Patients gathering at camps.



Yoga exercises

